

TRAVELER

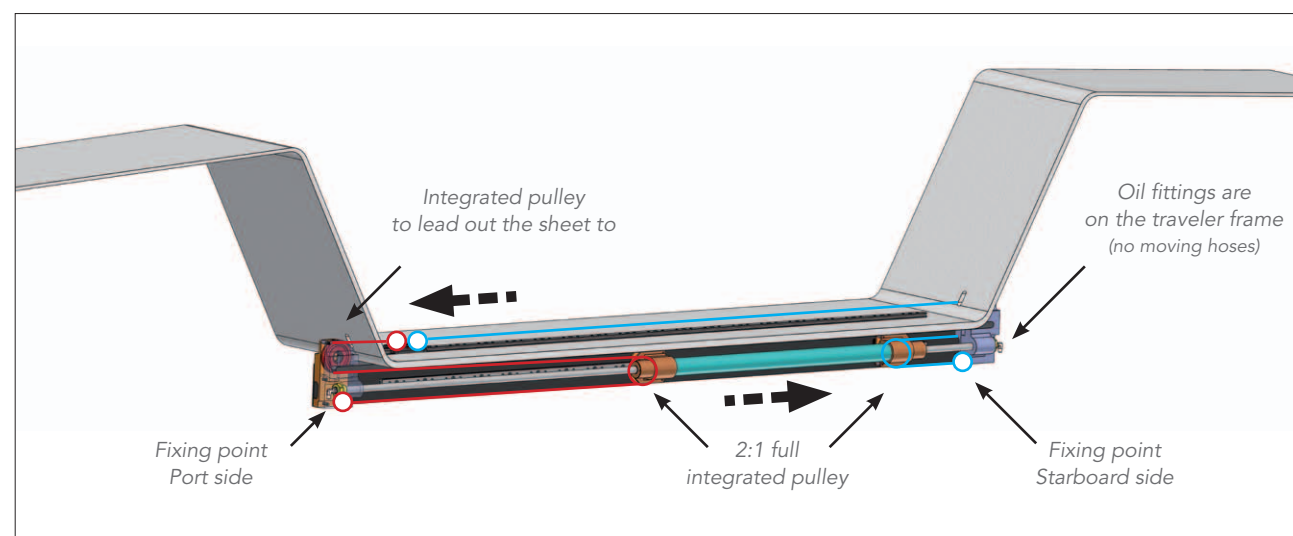
Designed for fast or race-cruiser sailing yachts, our hydraulic traveler let you to easily control the main or genoa cars.

The traveler has drilled rods: oil is pumped in the cylinder tube through the rod terminals which are fixed to the chasis of the system.

The same length of the main traveller track is guarantee by the 2:1 integrated purchase system. Tube terminals have integrated pulleys for the tackle.



Hydraulic traveler installed on board



The travelers are available with different types of chasis in order to follow the yacht design.

Black hard coated aluminium is used for tube and chasis; rods and pins are made of Nitronic 50 and low friction peek

is used for bearings. The frame is available in lightweight black hard coated aluminium or carbon fibre.

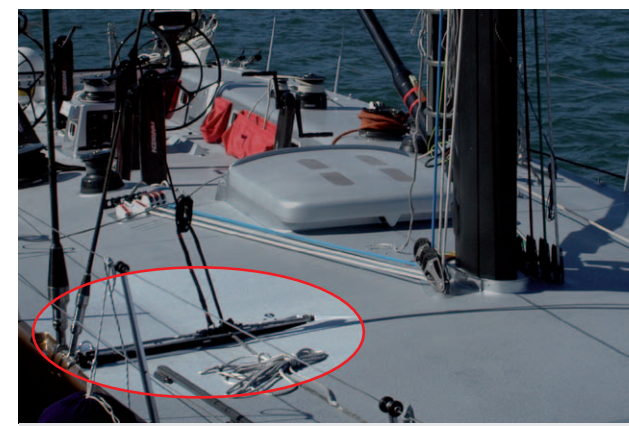
The framed can be removed, and it is possible to fix the traveler system straight to the bulkhead.

Custom models available on request.

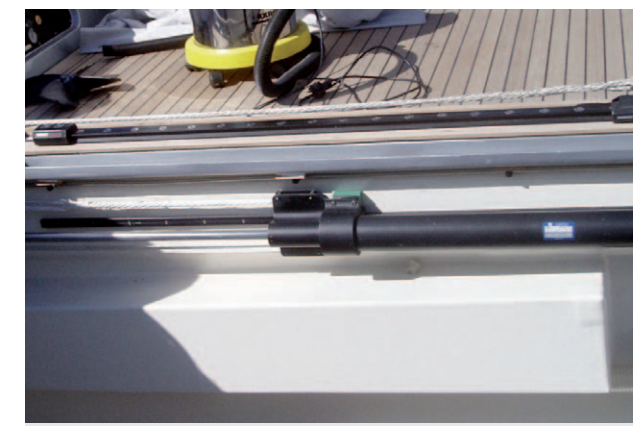
MODEL	Working load ⁽¹⁾		Stroke		Bore Ø		Rod Ø		Overall length	
	kg	lb	mm	in	mm	in	mm	in	mm	in
CL 040 DS 0900	1681	3707	900	35,4	40	1,57	20	0,78	2050	80,7
CL 045 DS 0330	2277	5019	330	13,0	45	1,77	20	0,78	980	38,6
CL 050 DS 0900	2942	6486	900	35,4	50	1,97	20	0,78	2102	82,8
CL 050 DS 1000	2942	6476	1000	39,4	50	1,97	20	0,78	2302	90,6
CL 050 DS 1100	2942	6476	1100	43,3	50	1,97	20	0,78	2502	98,5
CL 055 DS 2150	3363	7414	2150	84,6	55	2,17	25	0,98	4745	186,8
CL 055 DS 2000 Titanium ⁽²⁾	3459	7625	2000	78,7	55	2,17	25	0,98	4812	189
CL 065 DS 2430	5044	11120	2430	95,7	65	2,56	25	0,98	5211	205
CL 070 DS 0749	5990	13205	749	29,5	70	2,76	25	0,98	2490	98,0
CL 070 DS 1000	5990	13205	1000	39,4	70	2,76	25	0,98	2992	118
CL 100 DS 5245	12750	28108	5245	206	100	3,94	30	1,18	6103	240

(1) Sheet working load at 350 bar (5000 PSI) (2) Working pressure 500bar

TRAVELER



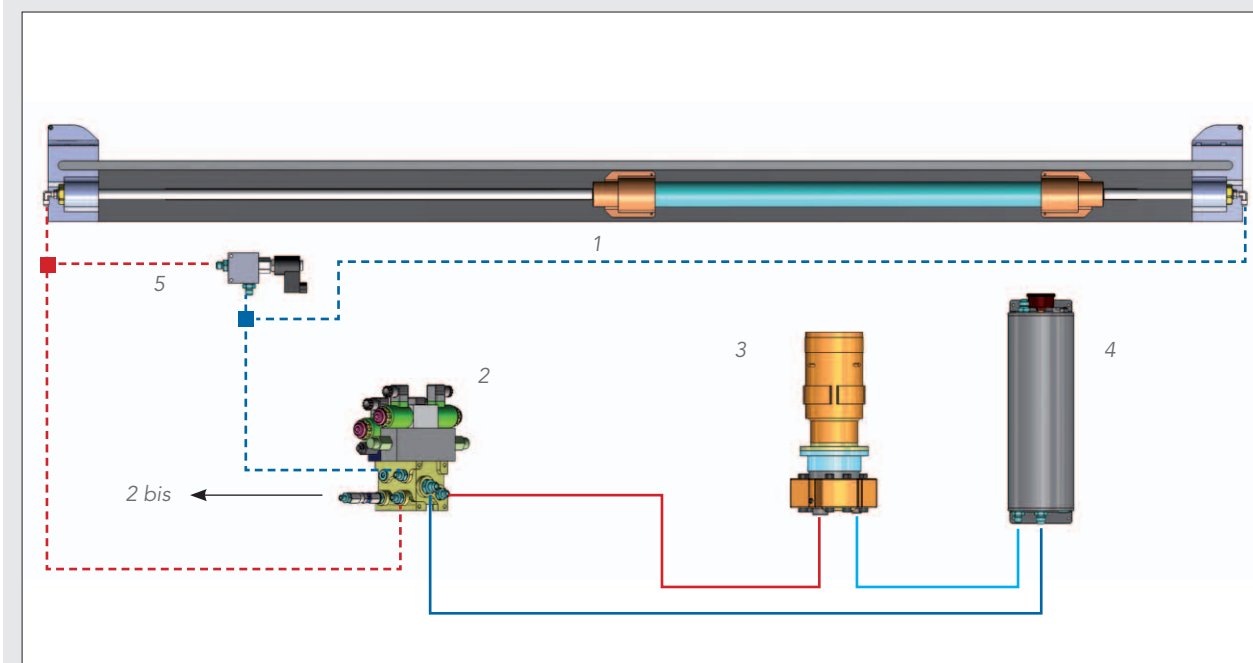
This double acting cylinder, closed to traveler arrangements is installed on a 90' race-cruiser yacht. It controls the jib car by two sheets and it is squeezed under the car track in a very small room.



Hydraulic traveler installed on a 86' fast cruise yacht. The rod terminals are fixed on the boat and the tube slide on car driven by a track. No moving hoses, easy installation and few space requirement.

Our package can be composed by:

- traveler double acting cylinder (with custom bore, stroke and arrangement) **(1)**
- valve block to drive the traveller system made on lightweight aluminium manifold and stainless steel fittings **(2)**
- electric back-up for manual panel up to 500bar **(2bis)**
- electric powerpack with high pressure piston pump and long life forced air cooled electric engine **(3)**
- pressurized aluminium oil tank **(4)**
- by-passed valve to bump the traveler when jibing/tacking or emergency **(5)**
- electric control box with stainless steel push buttons and proximity switches



Lighter and more compact systems, with a single acting cylinder, are available to control main car up from downwind up to the boat centre or to control jib in/out car.