

FIN

We have a long experience in fins design and construction for any kind of sailing yacht.

Fins can be created from a forged piece of high strength steel or welding sheets of Weldom material to have a lighter solution for higher performances.

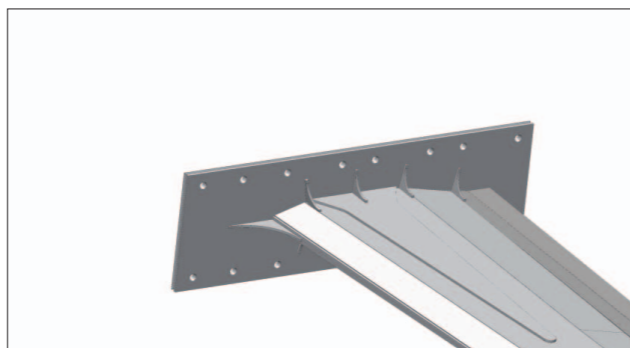


The fin on the left is CNC milling machined from a forged block to obtain the right shape. The one on the right is a welded fin made of Weldom.

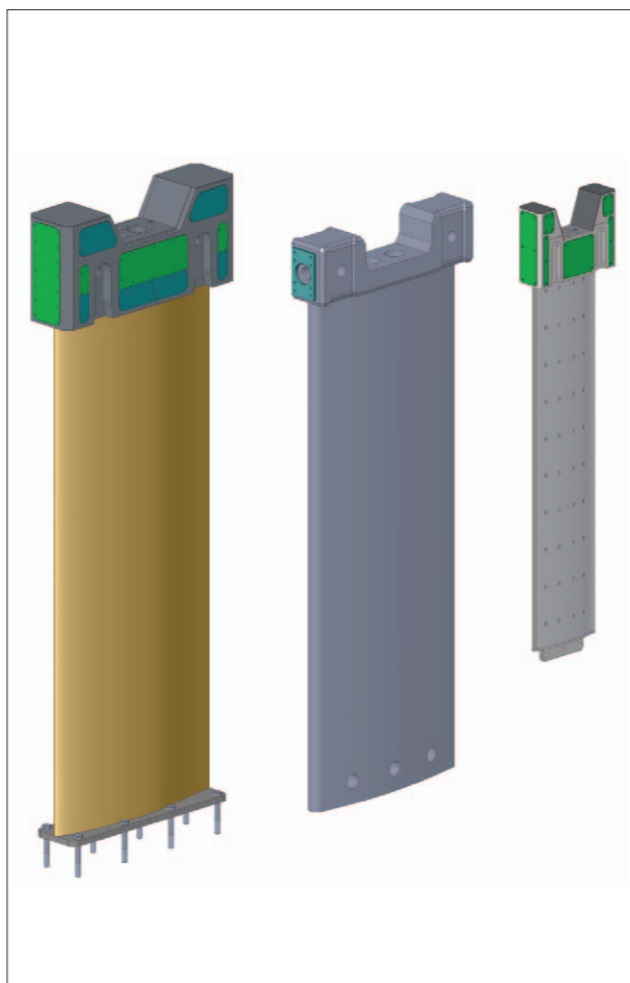


The lifting keel fin for a Comet 100' sailing yacht.

For high performance sailing yachts, we offer our 17-4PH fin. This kind of fin is made starting from a forged block of material, which is machined with our milling machine, in order to obtain a light and small beam that will be the core of the fin.

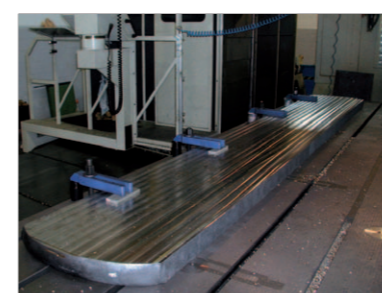


A detail of the upper part of the pin with the reinforcements.

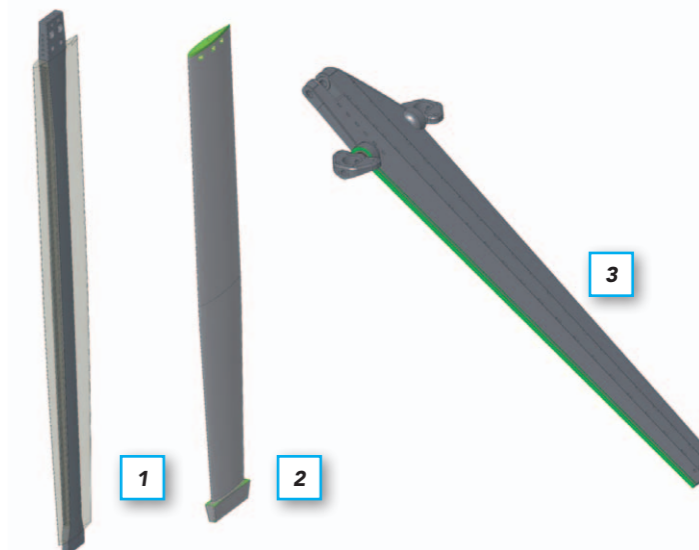


From left to right, the fin for a 100', 82' and for a 40' racing sailing yacht.

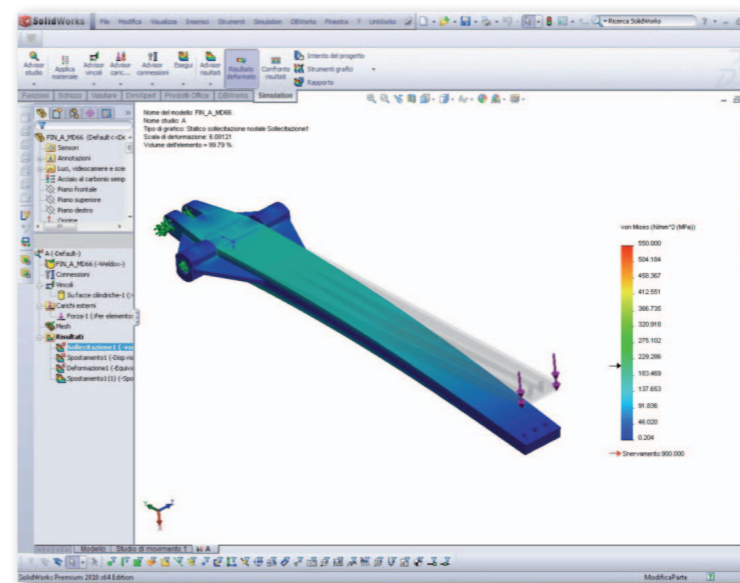
FIN



A 3400mm of forged 17-4PH steel at the CNC milling machine.



1 / 2: Two examples of canting keel fin made of 17-4PH stainless steel. Both fins are machined out starting from a forged piece of steel and then finished at the CNC milling machine.
3: It is a welded model of Weldom steel: this fin has the rotating axis welded on the fin head.



An example of stress study on a 67' canting keel fin.



The JP54 with Cariboni welded fin.

A forged fin made of 17-4PH. The structure is studied for the maximum performance of stiffness with the minimum weight.

